



# ELECTRONIC DIGITAL INSTRUMENT

**Michael Bierylo**, Chair

**Michele Darling**, Assistant Chair

## YOU SHOULD HAVE A PREPARED PIECE:

Your performance should be three to four minutes in length and can either be an original piece or a cover of an existing song that demonstrates your skills as a performer. Your performance should showcase yourself as a performer and include musical expression with as many types of performance techniques as you feel best showcases your strengths. These can include: live remixing, finger drumming, live looping and sequencing, real-time effects processing, and real-time performance of individual musical parts using either a grid or keyboard controller.

In addition to your prepared piece, you should have a default setup (tracks or channels in your DAW prepared with sound sources already on them) that will allow you to play musical parts and your choice of sounds for an improvised performance. These sound sources could include a melody instrument sound, a bass instrument sound, chordal accompaniment, percussive sounds, or loops. Please make sure that all sounds are clear and concise and do not include large amounts of reverb or effects.

## YOU MAY BE ASKED TO PLAY SELECTED EXAMPLES FROM THE FOLLOWING LIST:

- Scales: Major and natural minor keys.  
Three- and four-note chords from major keys.
- Reading: Included in this packet are reading examples that you can practice prior to your audition. We may also give you sight-reading examples at the audition.
- Ear training: You will be asked to participate in call-and-response exercises. The audition team will play short rhythms and melodies that you will play back on your grid or keyboard controller.
- Improvisation: You will be asked to improvise along with a drum groove provided by the audition team. You should be able to play musical ideas—either melodic, harmonic, or rhythmic—and match the tempo, or you can play back sequenced parts or loops.

## IT IS IMPORTANT TO US TO FIND OUT HOW YOU PRACTICE.

Feel free to show us techniques that you have used to develop your skill as an electronic performer.

## WHAT TO BRING:

To audition, bring all components of your instrument, including your computer and power cords/cables/charger, controllers (grid, keyboard, mixer, or other), and all cables needed for your setup. Our PA system allows for female XLR, balanced 1/4", or 1/8" cable connections. Feel free to bring an audio interface and/or mixer if you need one. Also, bringing your own headphones can be useful if you'd like to check your sound before playing in the room. We will provide tables and music stands.

## SETTING UP:

You will have only a few minutes to set up and warm up for the audition, so please be mindful of bringing a performance system that you can set up relatively quickly that will still allow you to demonstrate your musical abilities.

# EDI Reading Examples

Melody Example 1



Melody Example 2



Melody Example 3

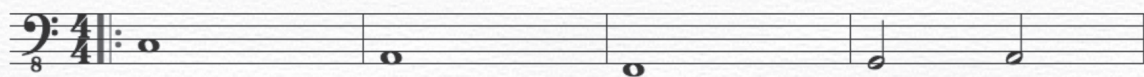


Melody Example 4

The image shows two staves of musical notation for 'Melody Example 4'. Both staves are in 4/4 time and have a key signature of one flat (Bb). The first staff begins with a treble clef and a key signature change from one flat to two flats (Bb and Eb). The melody consists of eighth and sixteenth notes, with some beamed sixteenth notes. The second staff begins with a treble clef and a key signature change from two flats to one flat (Bb). It starts with a triplet of eighth notes, indicated by a '3' above the first three notes. The melody continues with eighth and sixteenth notes, ending with a double bar line.



### Bass Example 1



5



### Bass Example 2



5



### Bass Example 3



4



7



### Bass Example 4



### Pad Example 1

Use a synthesizer pad or organ sound

Musical notation for Pad Example 1, measures 1-14. The key signature is one flat (Bb) and the time signature is 4/4. The notation is written on a single staff in treble clef. Measures 1-4 show a sequence of chords: G2-Bb2 (measure 1), G2-Bb2 (measure 2), G2-Bb2 (measure 3), and G2-Bb2 (measure 4). Measures 5-8 show a sequence of chords: G2-Bb2 (measure 5), G2-Bb2 (measure 6), G2-Bb2 (measure 7), and G2-Bb2 (measure 8). Measures 9-12 show a sequence of chords: G2-Bb2 (measure 9), G2-Bb2 (measure 10), G2-Bb2 (measure 11), and G2-Bb2 (measure 12). Measures 13-14 show a sequence of chords: G2-Bb2 (measure 13), G2-Bb2 (measure 14), G2-Bb2 (measure 15), and G2-Bb2 (measure 16). The notation uses whole notes for the chords, with a fermata over the final measure (measure 16).

### Pad Example 2

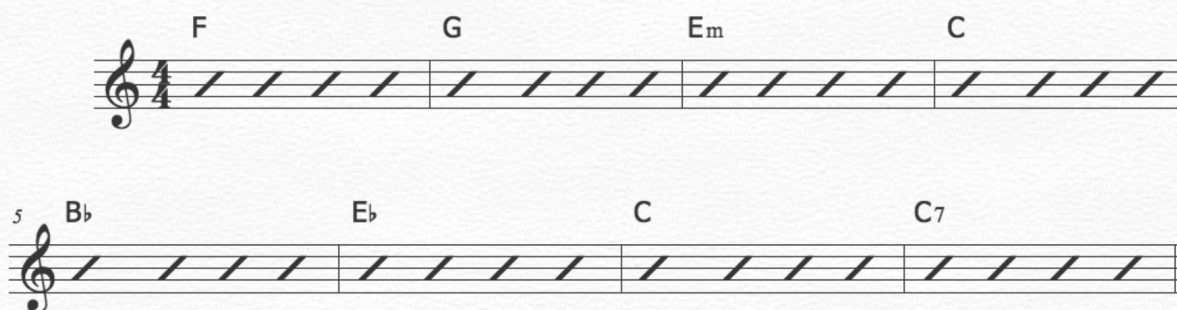
Use synthesizer pad or organ sound

Musical notation for Pad Example 2, measures 1-10. The key signature is two sharps (F# and C#) and the time signature is 4/4. The notation is written on a single staff in treble clef. Measures 1-4 show a sequence of chords: D3-F#3 (measure 1), D3-F#3 (measure 2), D3-F#3 (measure 3), and D3-F#3 (measure 4). Measures 5-8 show a sequence of chords: D3-F#3 (measure 5), D3-F#3 (measure 6), D3-F#3 (measure 7), and D3-F#3 (measure 8). Measures 9-10 show a sequence of chords: D3-F#3 (measure 9), D3-F#3 (measure 10), D3-F#3 (measure 11), and D3-F#3 (measure 12). The notation uses whole notes for the chords, with a fermata over the final measure (measure 12).



### Chord Reading Example 1

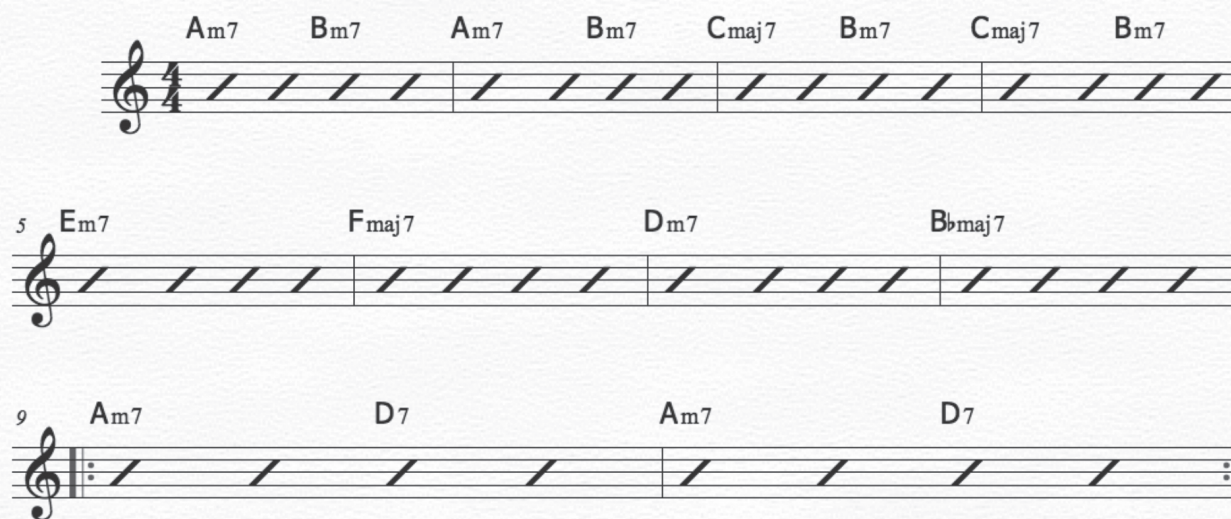
Use any polyphonic synthesizer sound



Chord Reading Example 1 musical notation. The first staff is in 4/4 time and contains four measures of chords: F, G, Em, and C. The second staff starts at measure 5 and contains four measures of chords: Bb, Eb, C, and C7. The notation uses a treble clef and a 4/4 time signature. Chords are indicated by letters above the staff, and the notes are represented by diagonal lines.

### Chord Reading Example 2

Use an electric piano or similar synthesizer sound



Chord Reading Example 2 musical notation. The first staff is in 4/4 time and contains eight measures of chords: Am7, Bm7, Am7, Bm7, Cmaj7, Bm7, Cmaj7, and Bm7. The second staff starts at measure 5 and contains four measures of chords: Em7, Fmaj7, Dm7, and Bbmaj7. The third staff starts at measure 9 and contains four measures of chords: Am7, D7, Am7, and D7. The notation uses a treble clef and a 4/4 time signature. Chords are indicated by letters above the staff, and the notes are represented by diagonal lines.

### Rhythm Example 1

Use a single sound or combination of percussion sounds



5



### Rhythm Example 2

Use a single sound or a combination of percussion sounds



3

