



WOODWINDS

FLUTE

Walter Smith, Chair

1. PREPARED PIECE:

Choose a piece that shows off your strengths, in any musical style.

2. IMPROVISATION:

If the prepared piece is a classical piece, a transcription, or other piece that does not include improvisation, you will be asked to improvise on a 12 bar blues in C, Bb, or F. If you are not an experienced improviser, don't worry. This is just an assessment to place you with other students with a similar level of experience.

3. SIGHT-READING:

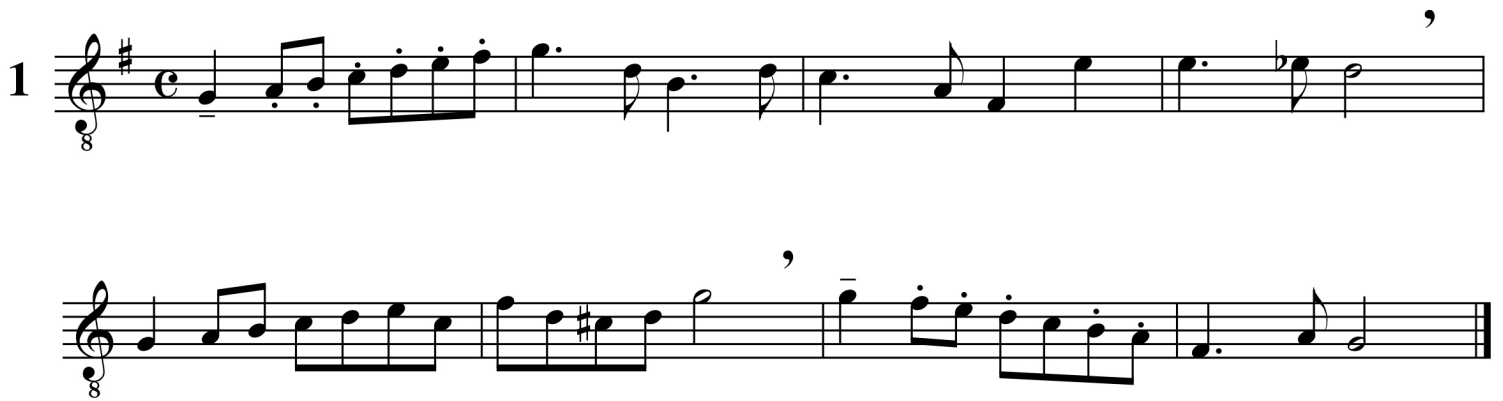
The reading excerpts in the packet are just an example of what you will be asked, but you will actually be sight-reading in the audition.

4. INSTRUMENTAL SKILLS:

We will ask you to play a scale or two (full range major, jazz melodic, harmonic minor scale, or full range chromatic scale, and/or a few seventh chords).

Classical Example 1

Treble Clef



Jazz Example 2

Med. Samba $\text{♩} = 112$

mp

f

mp

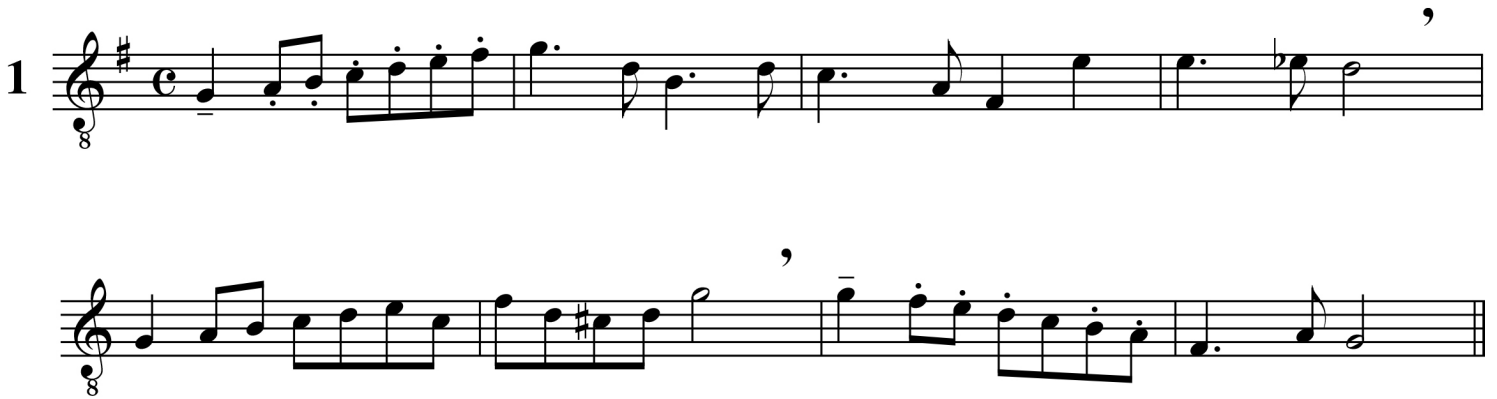
f

mp

f

Classical Example 1

Treble Clef



Classical Example 2

Lyrical

♩ = 72

mp

p